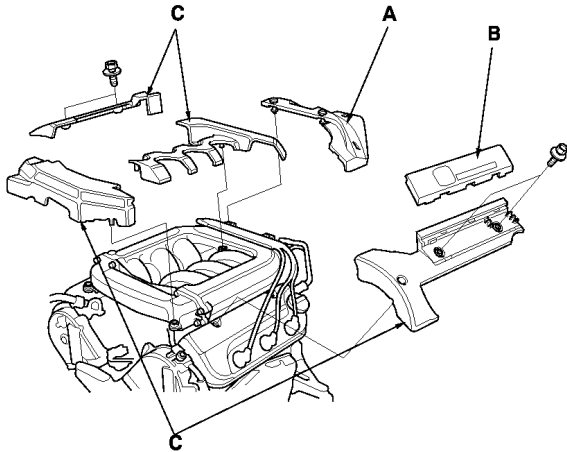


2000 ACCORD - Valve Clearance Adjustment

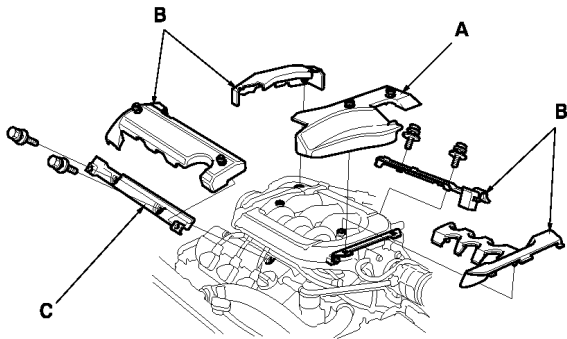
NOTE: Adjust the valves only when the cylinder head temperature is less than 100°F (38°C).

1. '98-99 models: Remove the throttle body cover (A), ignition wire cover (B) and intake manifold covers (C).
'00-02 models: Remove the throttle body cover (A), intake manifold covers (B) and intake manifold cover stay (C).

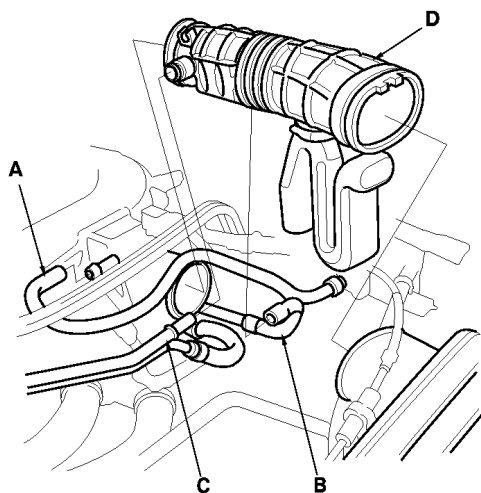
'98-99 models:



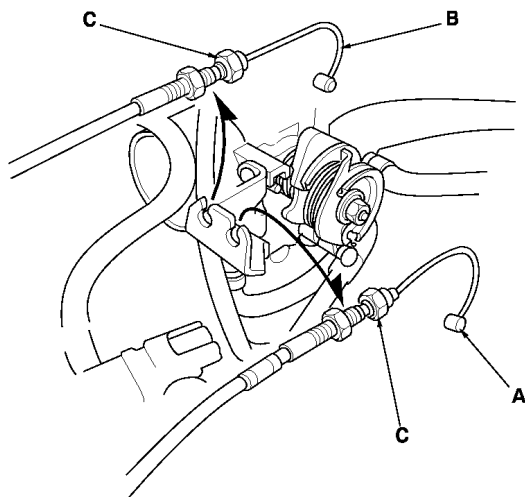
'00-02 models:



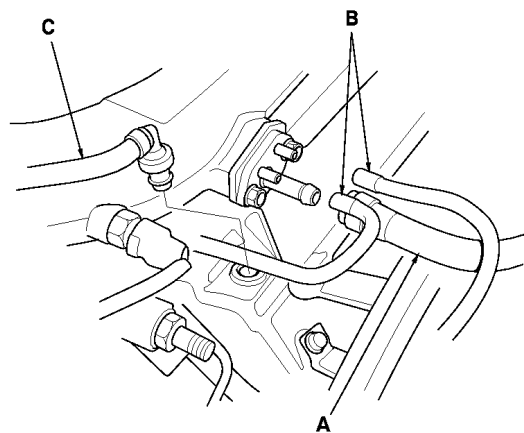
2. Remove the Evaporative Emission (EVAP) canister hose (A) from the throttle body.
3. Remove the vacuum hose (B) and breather pipe (C), then remove the intake air duct (D).



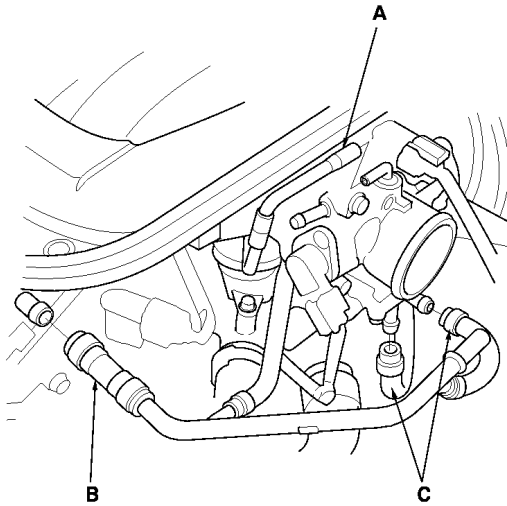
4. Remove the throttle cable (A) and cruise control cable (B) by loosening the locknuts (C), then slip the cable ends out of the accelerator linkage. Take care not to bend the cables when removing them. Always replace any kinked cable with a new one.



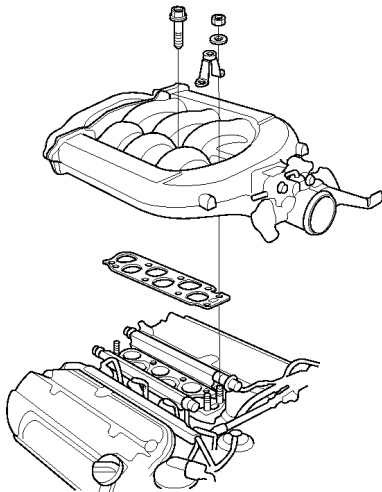
5. Remove the brake booster vacuum hose (A), vacuum hoses (B) and Positive Crankcase Ventilation (PCV) hose (C).



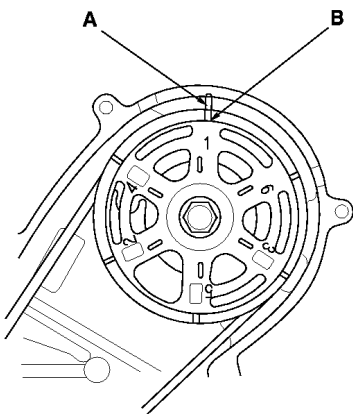
6. Remove the vacuum hose (A) ('98-99 models), breather hose (B) and water bypass hoses (C).



7. Remove the intake manifold.



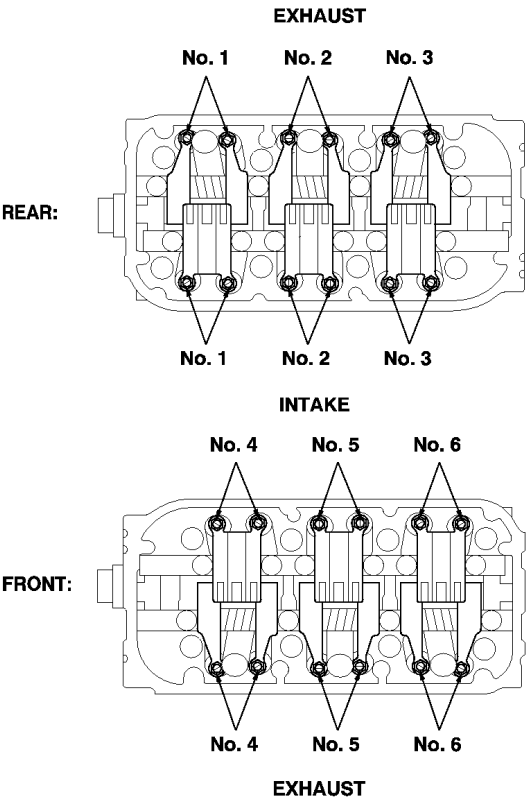
8. Remove the cylinder head covers.
9. Remove the front upper cover.
10. Set the No. 1 piston at TDC. Align the pointer (A) on the back cover with the No. 1 piston TDC mark (B) on the front camshaft pulley.



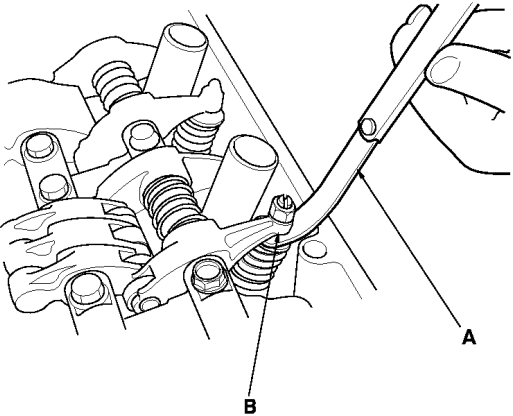
11. Select the correct thickness feeler gauge for the valves you're going to check.

Intake:	0.20-0.24 mm (0.008-0.009 in.)
Exhaust:	0.28-0.32 mm (0.011-0.013 in.)

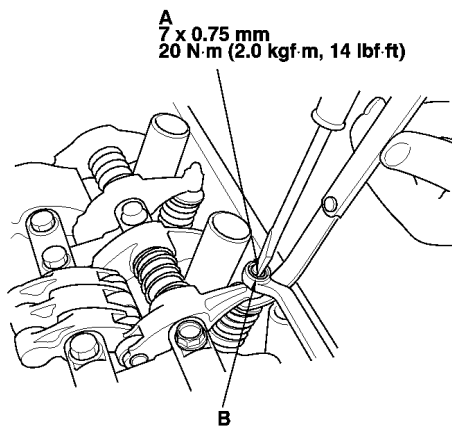
Adjusting screw locations:



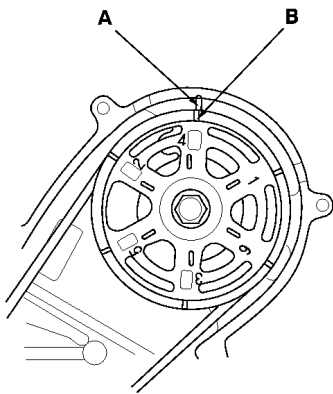
12. Insert the feeler gauge (A) between the adjusting screw (B) and the end of the valve stem and slide it back and forth; you should feel a slight amount of drag.



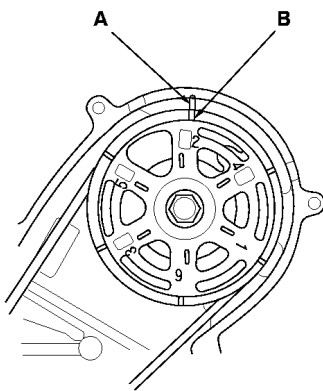
13. If you feel too much or too little drag, loosen the locknut (A), and turn the adjusting screw (B) until the drag on the feeler gauge is correct.



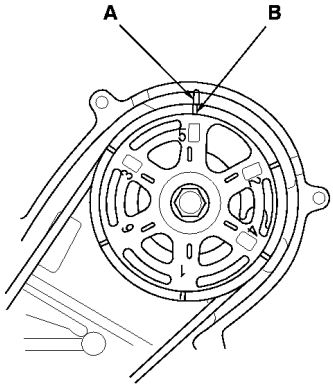
14. Tighten the locknut and recheck the clearance.
Repeat the adjustment if necessary.
15. Rotate the crankshaft clockwise. Align the pointer (A) on the back cover with the No. 4 piston TDC mark (B) on the front camshaft pulley.



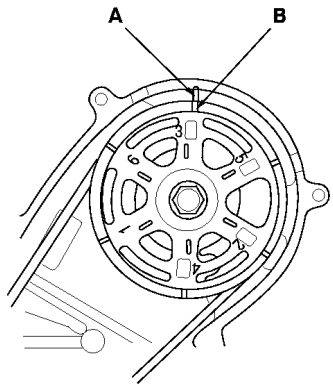
16. Check and, if necessary, adjust the valve clearance on No. 4 cylinder.
17. Rotate the crankshaft clockwise. Align the pointer (A) on the back cover with the No. 2 piston TDC mark (B) on the front camshaft pulley.



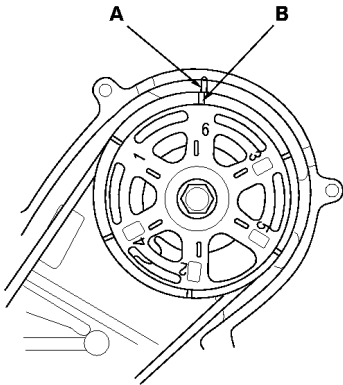
18. Check and, if necessary, adjust the valve clearance on No. 2 cylinder.
19. Rotate the crankshaft clockwise. Align the pointer (A) on the back cover with the No. 5 piston TDC mark (B) on the front camshaft pulley.



20. Check and, if necessary, adjust the valve clearance on No. 5 cylinder.
21. Rotate the crankshaft clockwise. Align the pointer (A) on the back cover with the No. 3 piston TDC mark (B) on the front camshaft pulley.



22. Check and, if necessary, adjust the valve clearance on No. 3 cylinder.
23. Rotate the crankshaft clockwise. Align the pointer (A) on the back cover with the No. 6 piston TDC mark (B) on the front camshaft pulley.



24. Check and, if necessary, adjust the valve clearance on No. 6 cylinder.